
LIGHTWEIGHT WOOLEN TURNTABLE

Illustrated Parts Lists

The purchaser must instruct all operators on the proper use of this equipment. All standard industrial safety measures and equipment should be provided to protect the operator. Operators must be cautioned that improper or careless use of this equipment will cause bodily injury. If you do not have qualified operators to instruct new persons, contact your C.R.A. sales representative or write to C.R.A. factory direct.

From the library of: Diamond Needle Corp

Eastmanmachine
COMPANY

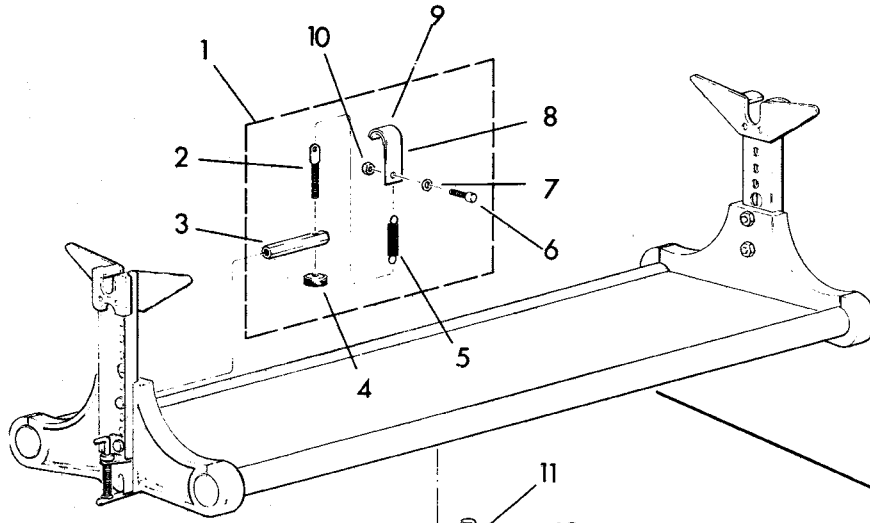
779 Washington St. • Buffalo, N.Y., U.S.A. 14203 • 716/856-2200 • Telex 4432018 • Cable EMC0BUF • Fax 716/856-1140
Manufacturer's of C.R.A. cloth spreading equipment

INDEX

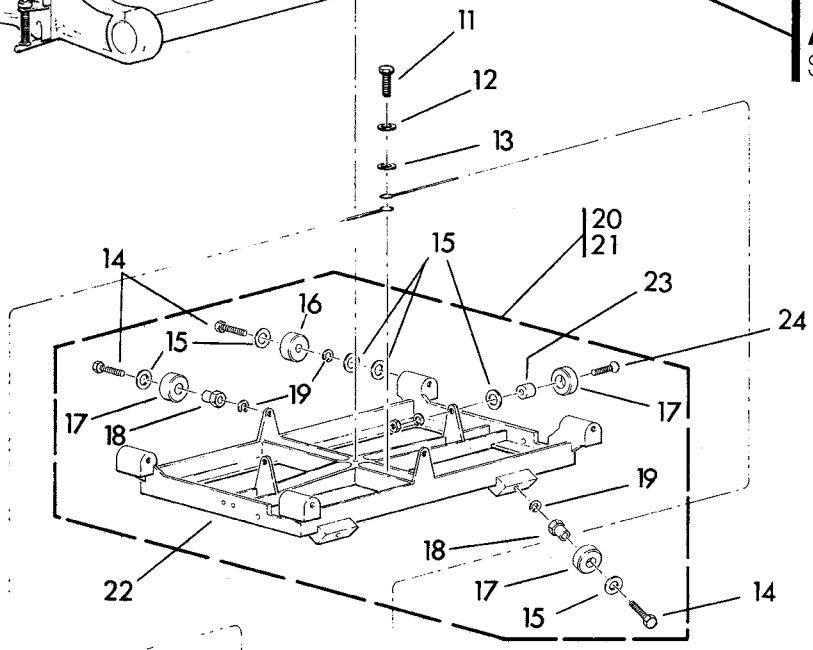
Page	Assembly Name
1-2	Final Assembly
3-4	Turntable
3-4	Lower Turntable Assembly
3-4	Uprights
5-6	Cross Member & Component Kit
7-8	Wrap Roller
7-8	Double Wrap Roller
9	Front Frame
9 & 1-2	Edge Control Assembly
10	Back Frame
B.C.	Rayon Bar: 5/8" & 3/4"

Illustrated Index

ITEM	PART NO.	DESCRIPTION	QTY.
1	CHT1308	Brake Shoe Ass'y	1
2	E-136-S	Hanger Bolt	1
3	CHT-68	Bar, Roll Brake	1
4	CHT-410	Nut, Knurled	1
5	CHT-411	Spring, Roll Brake	1
6	335-99-12	Screw, 10-24 x .750 Sockt	
		Cap	1
7	410-010	Flatwasher	1
8	CHT-412	Hook, Brake	1
9	9120-604-1	Leather Brake Pad	1
10	211-99	Nut, 10-24 Elastic Hex	1
11	331-34-32	Screw, 1/4-20 x 2 Hex Cap	1
12	410-34	Flat Washer	1
13	402-34	Lock Washer	1
14	331-36-20	Screw, 5/16-18 x 1.250	10
15	410-36	Flat Washer	22
16	CH-495	Turntable Bearing	4
17	F-274	Bearing, Actuating	
		Shaft	8
18	TL-225	Sleeve, Bearing, Eccentric	6
19	402-36	Lock Washer	12
20	TL-0401	Turntable, Lower Ass'y, Litewt.	1
21	TL-0401-1	Turntable, Lower Assy' H.D.	1
22	CH-325	Turntable, Lower Body	1
23	TL-224	Sleeve, Bearing	2
24	332-36-20	Screw, 5/16 x 1.250 Sockt Flt Hd.	2

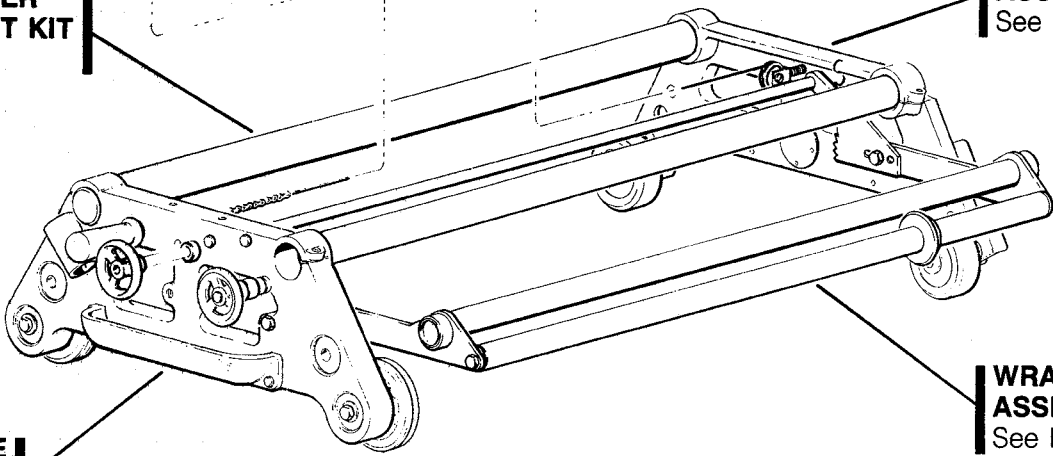


TURNTABLE ASSEMBLY
See Page 3



BACK FRAME ASSEMBLY
See Page 9

CROSS MEMBER & COMPONENT KIT
See Page 5



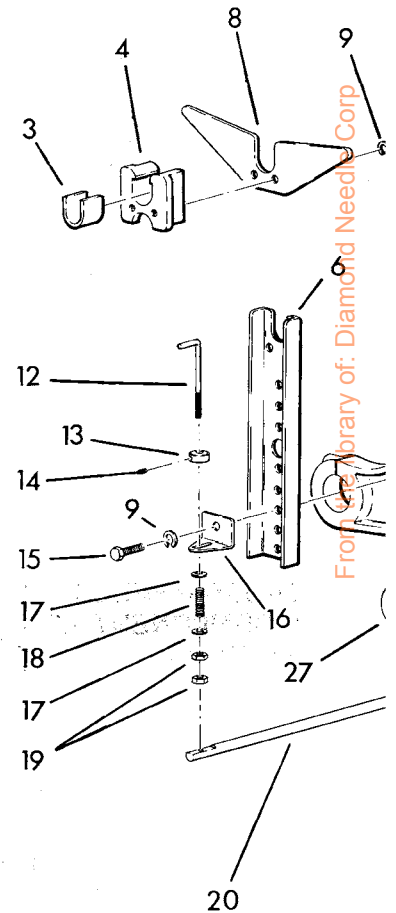
FRONT FRAME ASSEMBLY
See Page 9

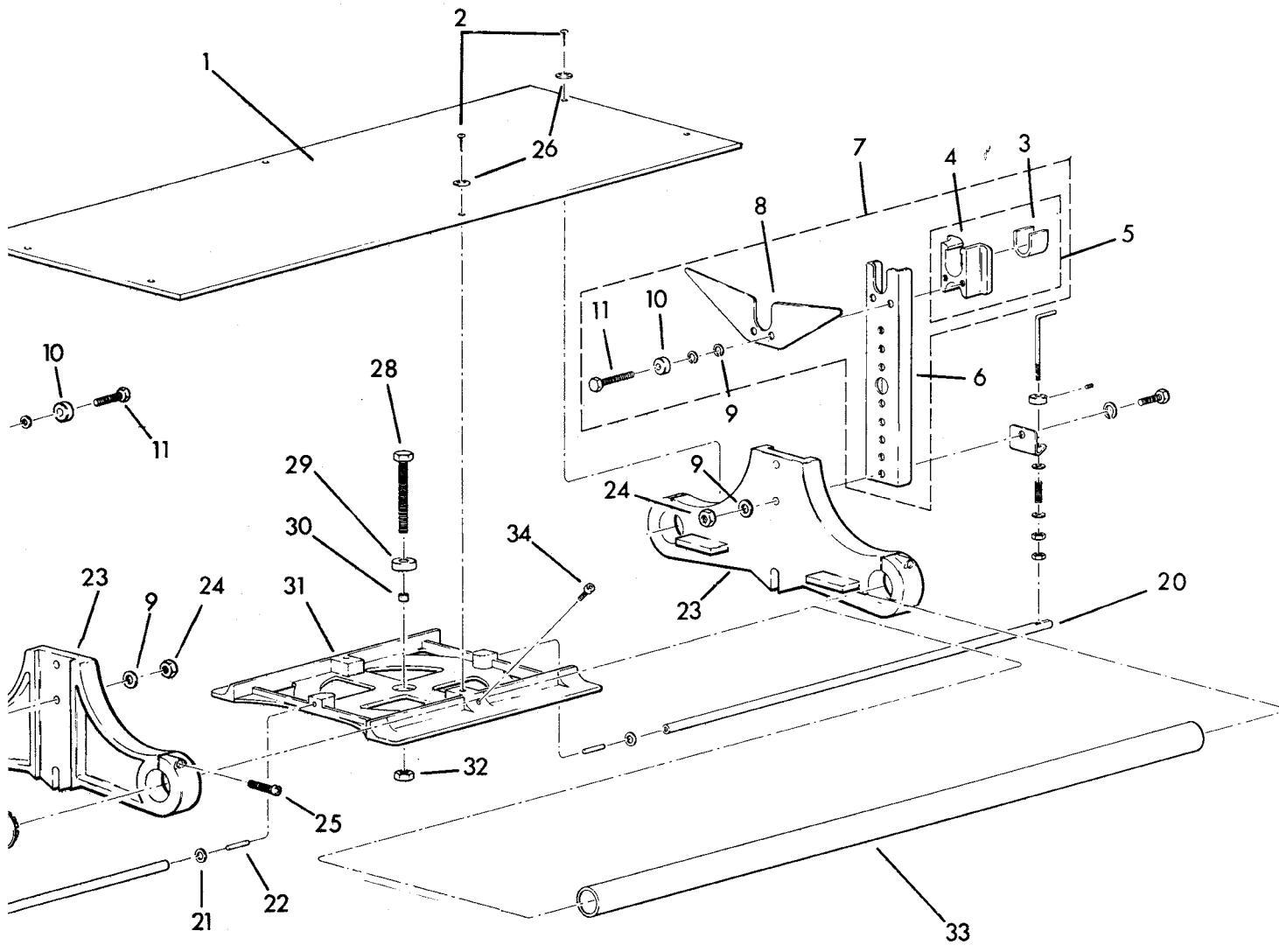
WRAP ROLLER ASSEMBLY
See Page 7

From the library of: Diamond Needle Corp

Turntable Assembly TL-0408-MS

ITEM	PART NO.	DESCRIPTION	QTY.
1	TL-03159-MS	Board, Top	1
2	368-99-8	Screw, Pan Hd 10-24 x .500	10
3	9120-604-1	Leather	2
4	TL-220	Block, Brake	2
5	TL-0202	Block, Brake Ass'y	2
6	F-172 T	Upright, Adjustable Top	2
7	TL-1002	Upright Assembly	2
8	F-182	Wing, Bat	2
9	402-36	Washer, Lock .3125 ID	12
10	F-111	Bearing, Upright	4
11	331-36-20	Screw, Hex Hd Cap 5/16-18 x 1.250	4
12	TL-233	Handle, Release	2
13	9060-021	Collar	2
14	342-102-2	Setscrew, Sckt Hex 10-32 x .188	2
15	331-36-16	Screw Hex Hd Cap 5/16-18 x 1.00	4
16	TL-214	Clip, Indexing	2
17	410-34	Washer, Flat .281 ID x .062 T	4
18	A-51	Spring, Stop	2
19	202-34	Nut, Hex 1/4-20	4
20	TL-227-1	Rod, Indexing	2
21	410-010	Washer, Flat .219 ID x .062 T	8
22	511-6-16	Roll Pin	2
23	TL-205	Frame, Turntable	2
24	206-36	Nut, Fin. Jam Hex 5/16-18	4
25	335-99-24	Screw, Sckt Hd Cap 10-24 x 1.500	4
26	409-99	Washer, Bevel Finishing	6
27	TL-210	Plug, Metal Large	4
28	335-38-64	Screw, Sckt Hd Cap 3/8-16 x 4.00	1
29	TL-244	Bearing, Thrust Ball	1
30	V-12	Bushing	1
31	TL-203	Turntable, Upper Body	1
32	205-38	Nut, Heavy Hex 3/8-16	1
33	TL-241-MS	Staytube, Turntable	2
34	331-36-20	Screw, Hex Hd Cap 5/16-18 x 1.250	2

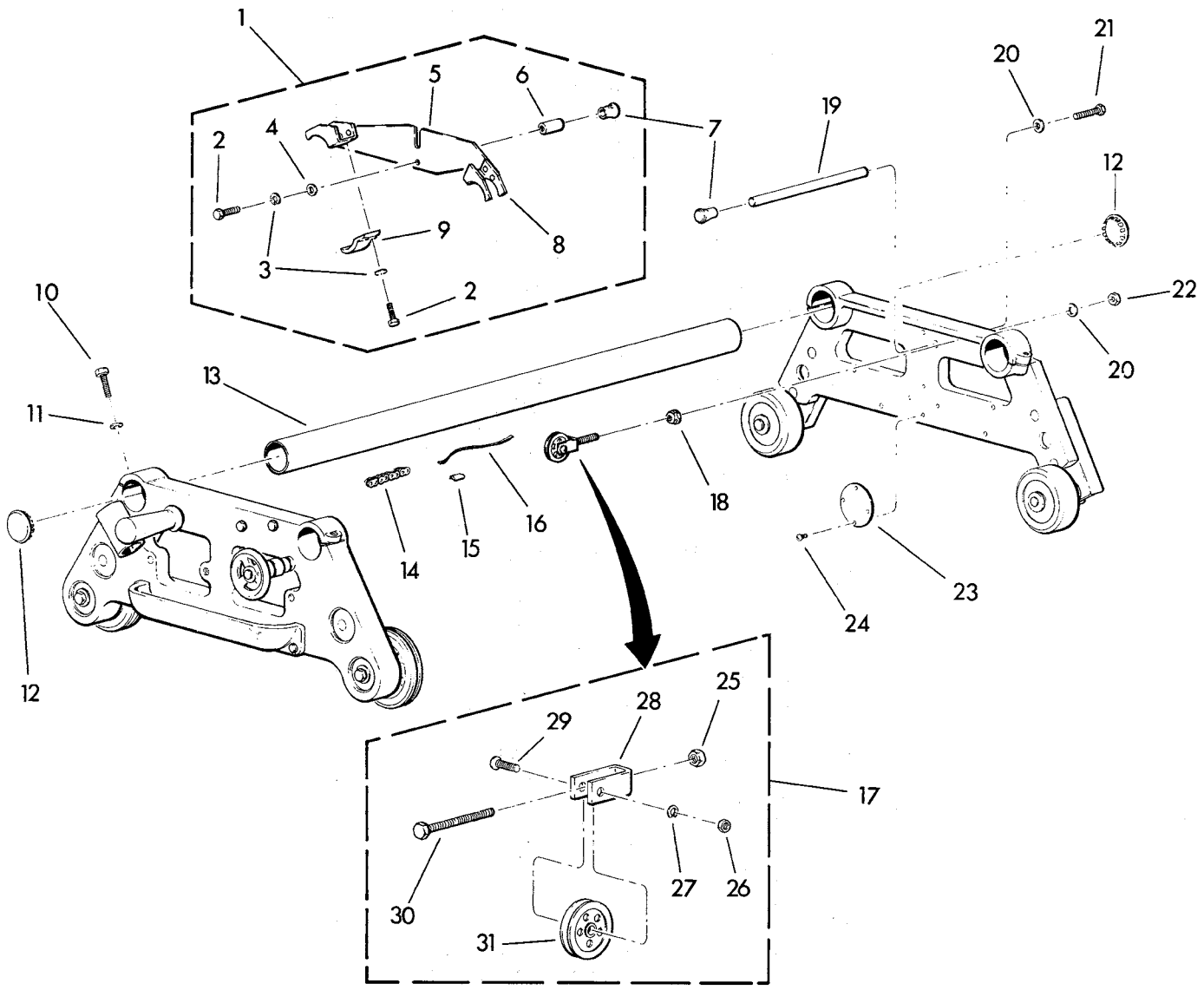




From the library of: Diamond Needle Corp

**Cross Member &
Component Kit
TL-0411-MS**

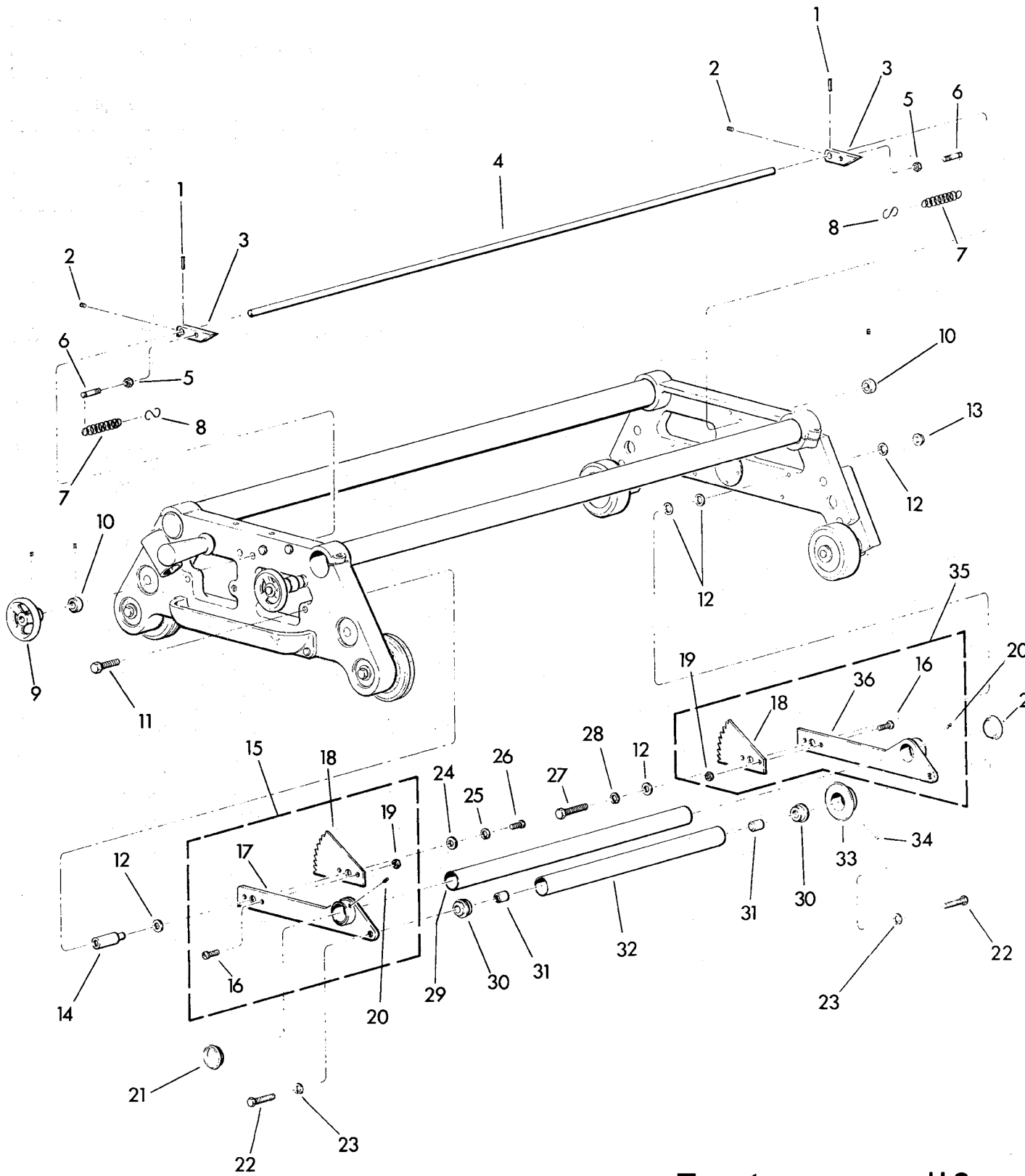
ITEM	PART NO.	DESCRIPTION	QTY.
1	TL-0301-2	Indexing Bracket Ass'y	1
2	331-34-10	Screw, Hex Cap, 1/4-20 x 5/8	3
3	402-34	Lockwasher	3
4	410-34	Flat Washer	5
5	TL-3001	Indexing Bracket	1
6	S-54	Stud	1
7	F-187-16	Bumper	2
8	CHTW-2037	Indexing Clamp, Top	2
9	TL-209	Bracket Clamp	2
10	331-38-32	Screw, Hex Cap, 3/8-16 x 2	4
11	410-38	Flat Washer	4
12	TL-210	Metal Plug	4
13	TL-241-MS	Staytube	2
14	9140-068-000	Chain, Edge Control	1
15	TL-261	Wire Crimp	4
16	E-134	Wire Rope	1
17	TL-0201	Sheave & Yoke Ass'y	1
18	216-36	Nut, Flange Lock Hex 5/16-18	3
19	TL-228-MS	Bumper Rod	1
20	410-36	Flat Washer	5
21	331-34-20	Screw, Hex Cap 1/4-20 x 1 1/4	2
22	205-34	Nut, Heavy Hex 1/4-20	2
23	CHTW-1013	Name Plate	1
24	391-0-3	Screw, Rd Hd. #0 x 3/16	4
25	203-36	Nut, Fin. Hex, 5/16-18	1
26	203-93	Nut, Fin Hex, 8-32	1
27	402-080	Lock Washer	2
28	CH-95	Yoke	1
29	318-93-16	Screw, Pan Hd., 8-32 x 1	1
30	357-36-40	Bolt, Hex Tap, 5/16-18 x 2 1/2	1
31	TL-260	Sheave	1



From the library of: Diamond Needle Corp

Wrap Roller Assembly TL-0307-MS

ITEM	PART NO.	DESCRIPTION	QTY.
1	511-4-12	Roll Pin	2
2	342-93-3	Setscrew, 8-32 x 3/16	2
3	TL-1011	Pawl, Ratchet	2
4	TL-1019-MS	Ratchet Bar	1
5	206-34	Nut, Jam Hex 1/4-20	2
6	C-45	Stud, Spring	2
7	E-131	Spring	2
8	196-002	S-Hook	2
9	CHT-424-2	Handwheel	1
10	9060-004	Collar	2
11	331-36-16	Screw, Hex Cap. 5/16-18 x 1	1
12	410-38	Flat Washer	5
13	216-38	Nut, Flange Lock Hex, 3/8-16	1
14	TL-229	Pivot Stud	1
15	TL-0302-2	Ratchet Ass'y L.H.9"	1
16	318-99-10	Screw, Pan Hd. 10-24 x 5/8	4
17	TL-0205-1	Arm, Roller Ass'y, 9"	1
18	TL-2003	Ratchet	2
19	211-99	Nut, Elastic Hex, 10-24	4
20	342-34-4	Setscrew, 1/4-20 x 1/4	4
21	TL-210-SP	Plug, Plastic	2
22	331-36-28	Screw, Hex Cap 5/16-18 x 1 1/4	2
23	402-36	Lock Washer	2
24	410-010	Flat Washer	1
25	402-010	Lock Washer	1
26	320-102-10	Screw, Bind. Hd. 10-32 x 5/8	1
27	331-38-28	Screw, Hex Cap 3/8-16 x 1 1/4	1
28	402-38	Lock Washer	1
29	TL-243-MS	Staytube	1
30	M-52	Bearing, Flanged	2
31	TL-226	Stud, Bearing Roller	2
32	TL-242-MS	Tube, Roller	1
33	TF10	Collar	1
34	342-34-6	Setscrew 1/4-20 x 3/8	1
35	TL-0302-1	Ratcher Ass'y, RH, 9"	1
36	TL-0205-2	Arm, Roller Ass'y 9"	1
37	SY-10480	Handle, Double Wrap Roller	2



From the library of: Diamond Needle Corp

Eastmanmachine
COMPANY

Front Frame

TL-0407 Std, 9"

TL-0407-2 H.D. 9"

TL-0407-3 Std, 11"

TL-0407-4 H.D., 11"

Back Frame

TL-0406 Std/H.D. 9"

TL-0406-2 Std 11"

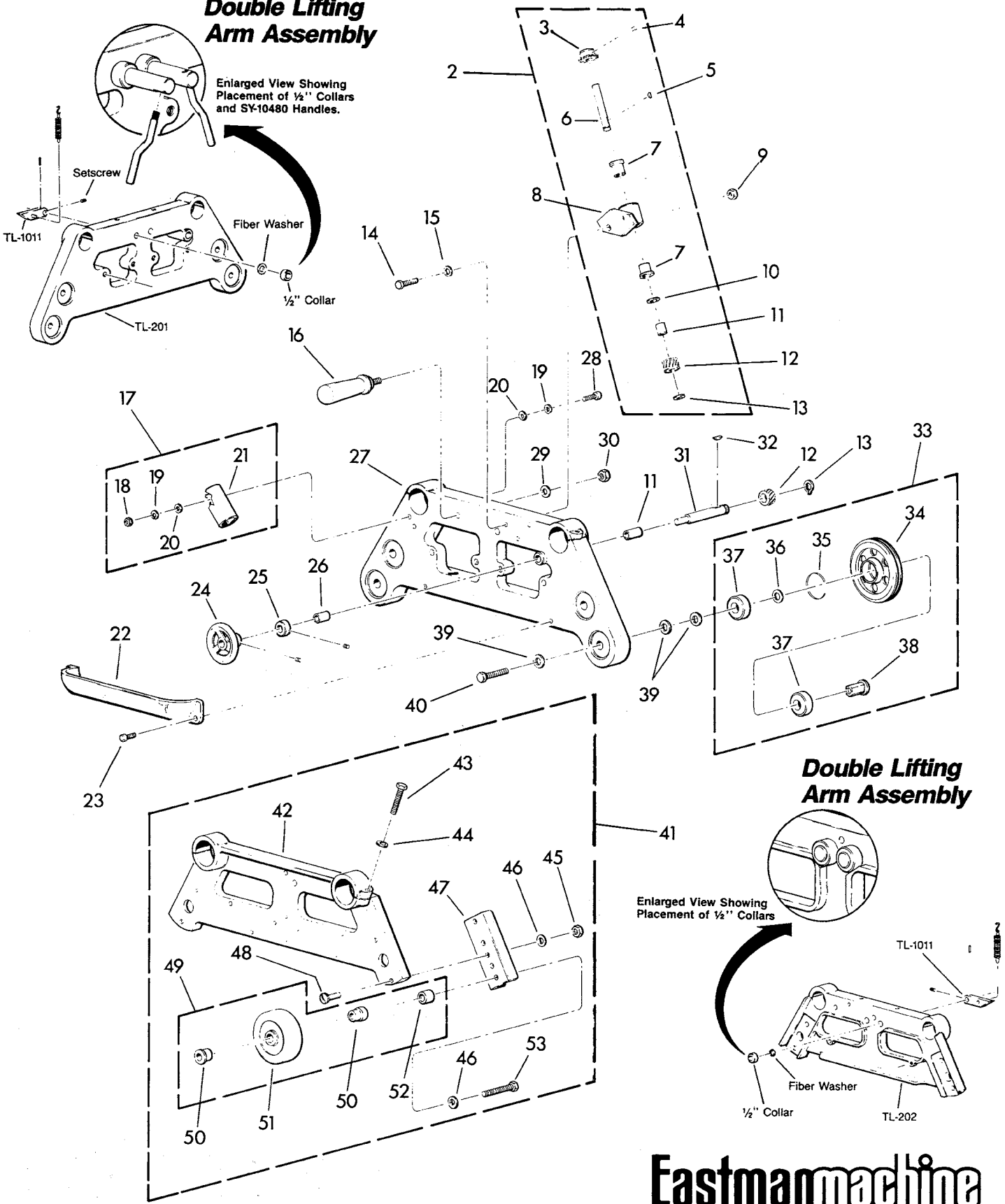
TRACK WHEEL CHART	
Description	Part No.
Standard	F-7A
Heavy Duty	F-7B

ITEM	PART NO.	DESCRIPTION	QTY.
1	TL-0407	Front Frame Ass'y, 9"	1
2	TL-0200	Pillow Block Ass'y	1
3	TL-237-2	Sprocket	1
4	342-102-6	Setscrew, 10-32 x 3/8	1
5	601-44	Woodruff Key	1
6	TL-231	Counter Shaft	1
7	9044-001	Nylon Bushing	2
8	TL-213	Pillow Block	1
9	205-34	Nut, Heavy Hex 1/4-20	2
10	411-44-2	Fiber Washer	4
11	TL-247	Bushing	2
12	E-26	Helical Gear	2
13	632-32	Retaining Ring	1
14	331-34-12	Screw, Hex Hd Cap, 1/4-20 x 3/4	2
15	402-34	Lockwasher 1/4	2
16	TL-238-2	Handle	1
17	9120-595	Kit-Scissor Holder	1
18	203-99	Nut, Fin. Hex 10-24	2
19	402-010	Lockwasher #10	2
20	410-010	Flatwasher #10	2
21	TL-1016	Scissor Holder	1
22	CHT-342	Tool Tray	1
23	335-99-8	Screw, Sckt Cap 10-24 x 1/2	2
24	CHT-424-4	Handwheel	1
25	9060-004	Collar	1
26	E-95-2	Bronze Bushing	1
27	TL-201	Front Frame	1
28	335-99-10	Screw, Sckt, Cap 10-24 x 5/8	2

ITEM	PART NO.	DESCRIPTION	QTY.
29	402-38	Lockwasher, 3/8	1
30	206-39	Nut, Jam Hex 3/8-24	1
31	TL-230	Shaft	1
32	601-404	Woodruff Key	1
33	TL-0203	Track Wheel Ass'y	2
34	F-7-X	Track Wheel, See Chart	1
35	631-100	Internal Retaining Ring	1
36	9002-025	Washer	1
37	F-100	Bearing	2
38	TL-221	Bushing, Track Wheel	1
39	410-44	Flat Washer	8
40	331-44-32	Screw, Hex Cap 1/2-20 x 2	2
41	TL-0406	Back Frame Ass'y 9" & Heavy Duty 9"	1
42	TL-202	Back Frame	1
43	331-38-28	Screw, Hex Hd Cap, 3/8-16 x 1 1/4	2
44	410-38	Flat Washer	2
45	205-36	Nut, Heavy Hex 5/16-18	4
46	402-36	Lock Washer	4
47	TL-217	Wheel Bracket	2
48	332-36-12	Screw, Sckt Flt Hd 5/16-18 x 1 1/4	4
49	TL-0206	Rubber Wheel Ass'y	2
50	TL-223	Bushing Tapped	2
51	F-96	Rubber Wheel	1
52	TL-266	Spacer	1
53	331-36-40	Screw, Hex Cap, 5/16-18 x 2 1/2	1
54	TL-2005	11" Exten. Front Frame	1

From the library of: Diamond Needle Corp

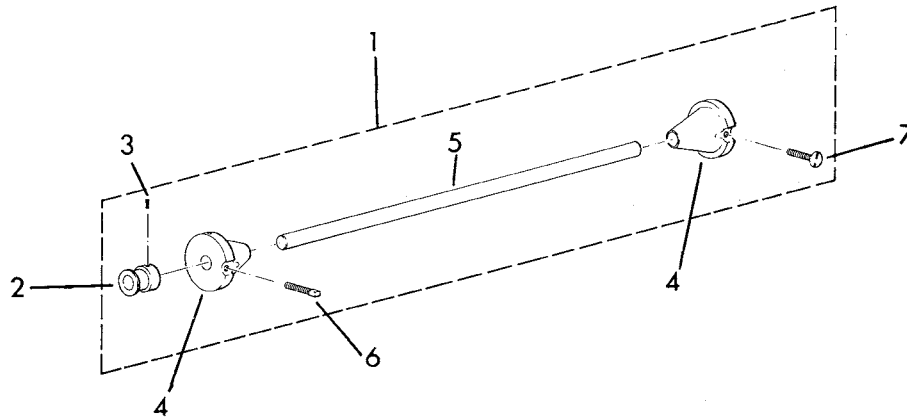
Double Lifting Arm Assembly



From the library of: Diamond Needle Corp

Eastman
machine
COMPANY

Rayon Bar



CH-0229-2-MS .625 Dia.

ITEM	PART NO.	DESCRIPTION	QTY.
1	CH-0229-1-MS	Rayon Bar Assembly .6250 Dia.	1
2	F-191-2	Shifter, Presto Plus Bar Assembly	1
3	342-34-3	Setscrew, Hex Sockt 1/4-20 x .188	1
4	F-226-A	Cone .625 Bore	2
5	CH-86-MS	Bar, Rayon .625 Dia.	1
6	337-36-20	Setscrew, Square Hd. 5/16-18 x 1.250	1
7	387-36-20	Screw, Thumb 5/16-18 x 1.250	1

CH-0229-2-MS .750 Dia.

1	CH-0229-2-MS	Rayon Bar Complete .750 Dia.	1
2	F-189-C	Shifter RBA Sleeve .750 Bore	1
3	342-34-4	Setscrew, Hex Sockt 1/4-20 x .250	1
4	F-226-B	Cone .750 Bore	2
5	CH-86 A-MS	Bar, Rayon .750 Dia.	1
6	337-36-20	Setscrew, Square Hd. 5/16-18 x 1.250	1
7	387-36-20	Screw, Thumb 5/16-18 x 1.250	1

From the library of: Diamond Needle Corp

Eastmanmachine
COMPANY

779 Washington St. • Buffalo, N.Y., U.S.A. 14203 • 716/856-2200 • Telex 4432018 • Cable EMC0BUF • Fax 716/856-1140